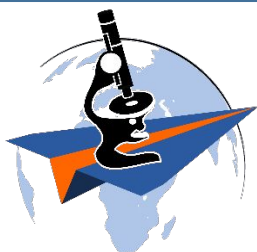




EquipSent

Enable Education Everywhere!



www.equipsent.org

Together, let's
Enable education everywhere!



Opportunities

- USA kick-off event Thu, 2nd of December, 6:00 pm
(online, please contact irina.ritsch@equipsent.org)
- A glimpse into operations:
matchmaking and case management team meetings every second Tuesday of the month
(online, next: 12/14, please contact irina.ritsch@equipsent.org)



Follow us on social media



info@equipsent.org
www.equipsent.org



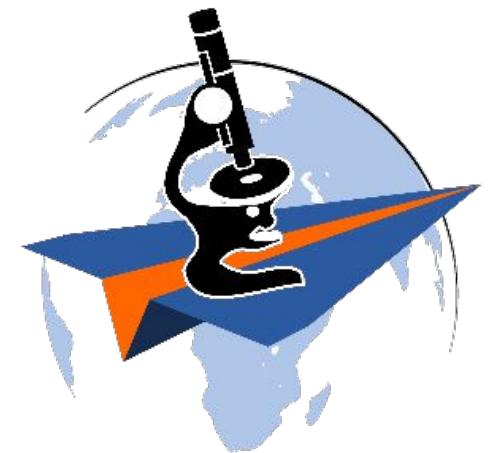
Warm-up

Test your international education knowledge !

Which country has the highest resp. lowest (based on estimates from 2010-2015) ...

1. ... percentage of population over age of 15 with tertiary education?
2. ... fraction of tertiary level students studying abroad (outgoing)?
3. ... government expenditure on tertiary education (as % GDP)?

**Award yourself 1 point per
correctly guessed country!**



Solution Education Quiz I

Which country has the highest resp. lowest (based on estimates from 2010-2015) ...

1. ... percentage of population over age of 15 with tertiary education?

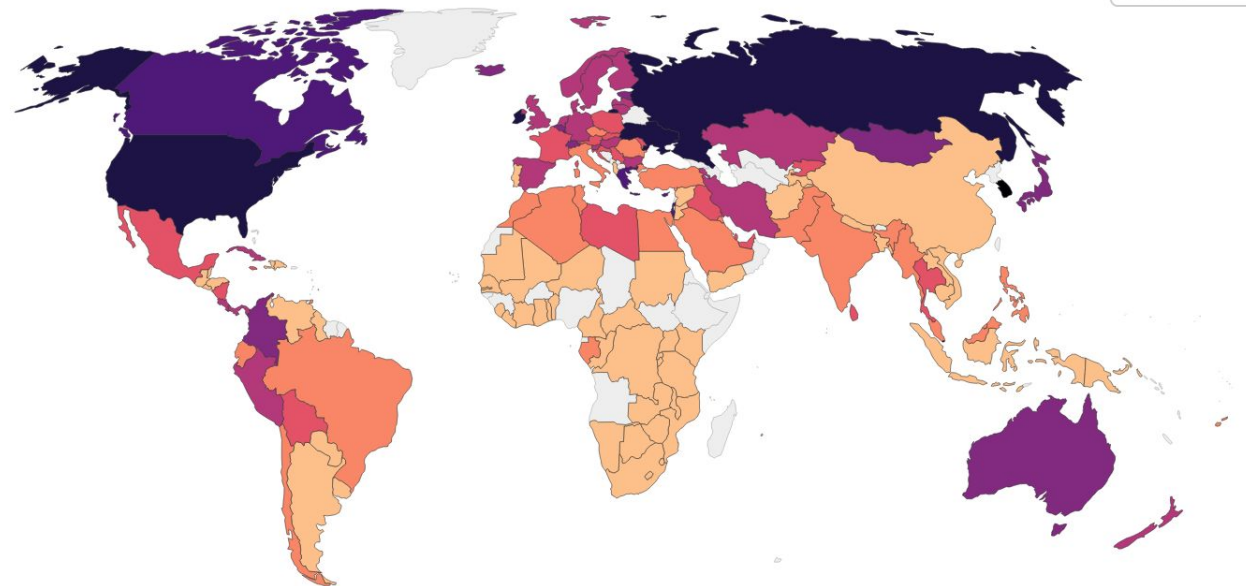
highest percentage (30 %): South Korea
lowest percentage (<0.01%): Guatemala
USA: 27%

Share of the population with completed tertiary education, 2010

The share refers to the population 15 years and older.

Our World
in Data

World



Source: Robert J. Barro and Jong-Wha Lee

OurWorldInData.org/tertiary-education/ • CC BY

Solution Education Quiz

Which country has the highest resp. lowest (based on estimates from 2010-2015) ...

2. ... fraction of tertiary level students studying abroad (outgoing)?

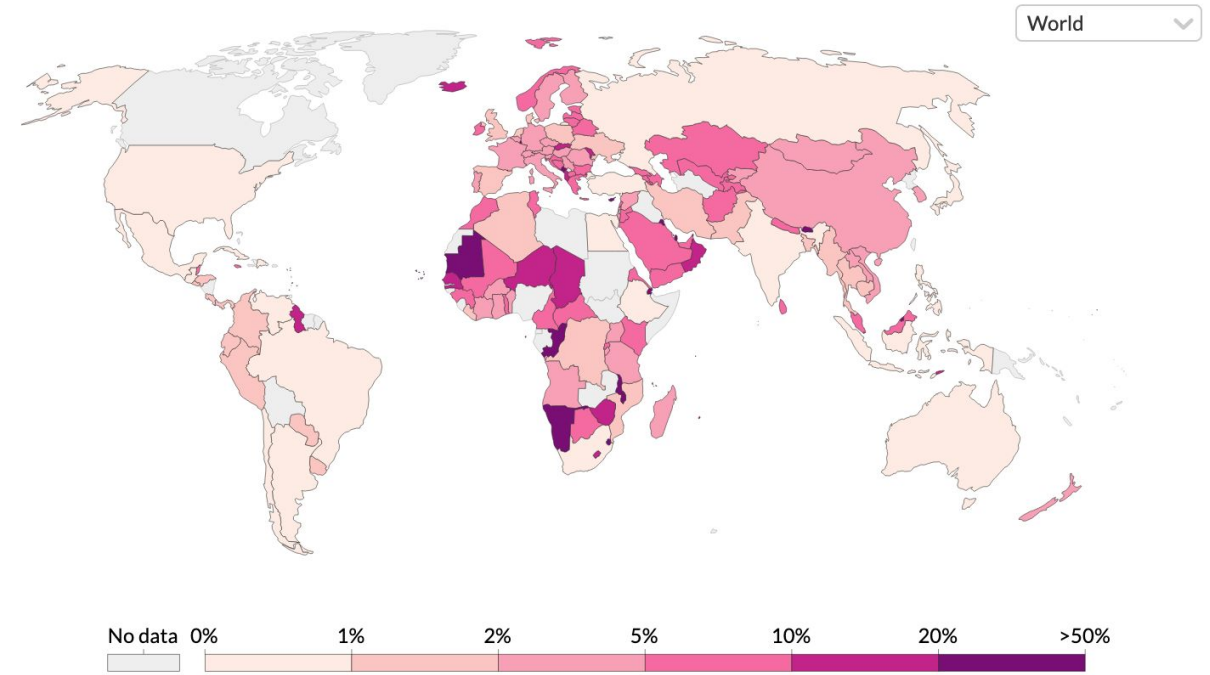
highest (>100 %): Island states (e.g. Turks and Caicos Islands, Tonga) and microstates (Andorra)

lowest (0.3%): Argentina and USA

Share of students studying abroad, 2013

Number of students from a given country studying abroad as a percentage of the total tertiary enrollment in that country.

Our World
in Data



Source: UNESCO Institute for Statistics

OurWorldInData.org/tertiary-education/ • CC BY

Solution Education Quiz

Which country has the highest resp. lowest (based on estimates from 2010-2015) ...

3. ... government expenditure on tertiary education (as % GDP)?

highest (4.7 % of GDP): Lesotho

lowest (0.05 % of GDP): Monaco

USA: 1.4 % of GDP

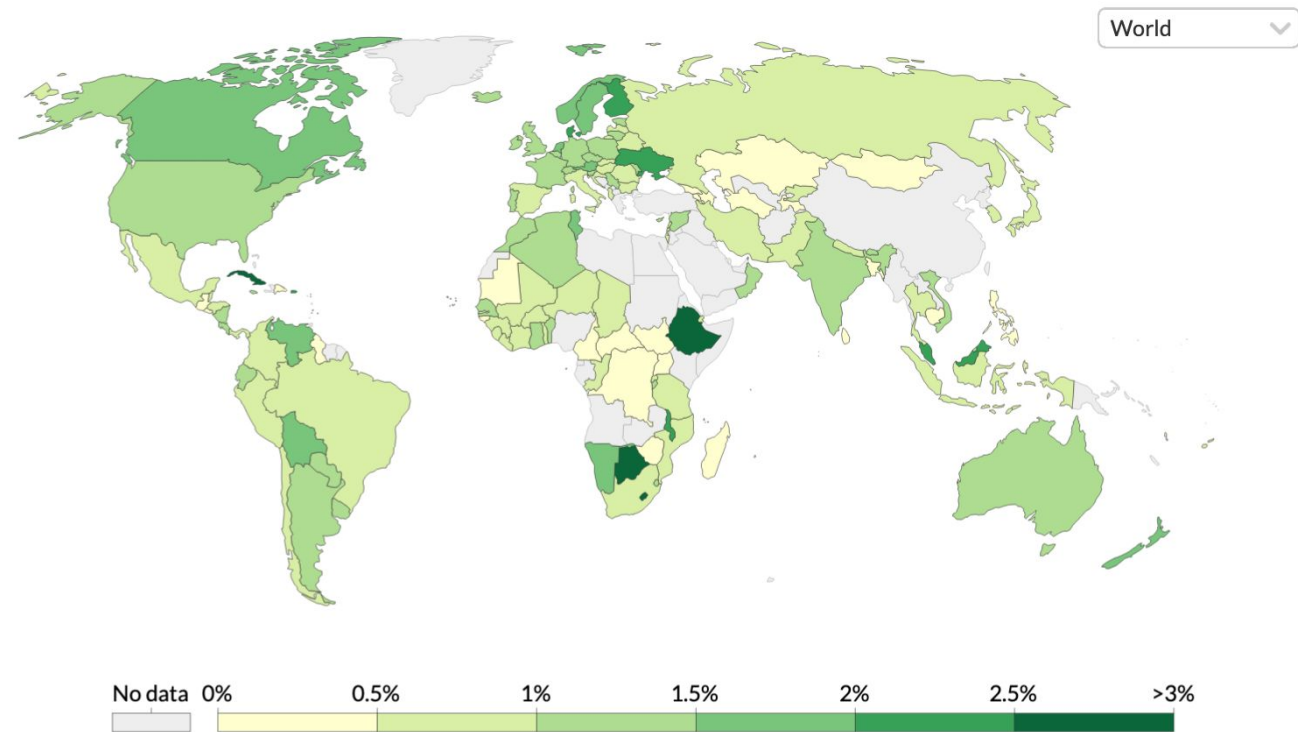
How did you do?

- More than 4 points - you are clearly up to speed with global education issues!
- 6 points? Congratulations, you are an international education expert!

Government expenditure on tertiary education, 2012

Total (local, regional and central) government expenditure on tertiary education (current, capital, and transfers), expressed as a percentage of GDP.

Our World
in Data



Source: UNESCO Institute for Statistics

OurWorldInData.org/tertiary-education/ • CC BY

What got us started?

No equipment for hands-on teaching in many institutions...



empty school rooms...
- DR Congo

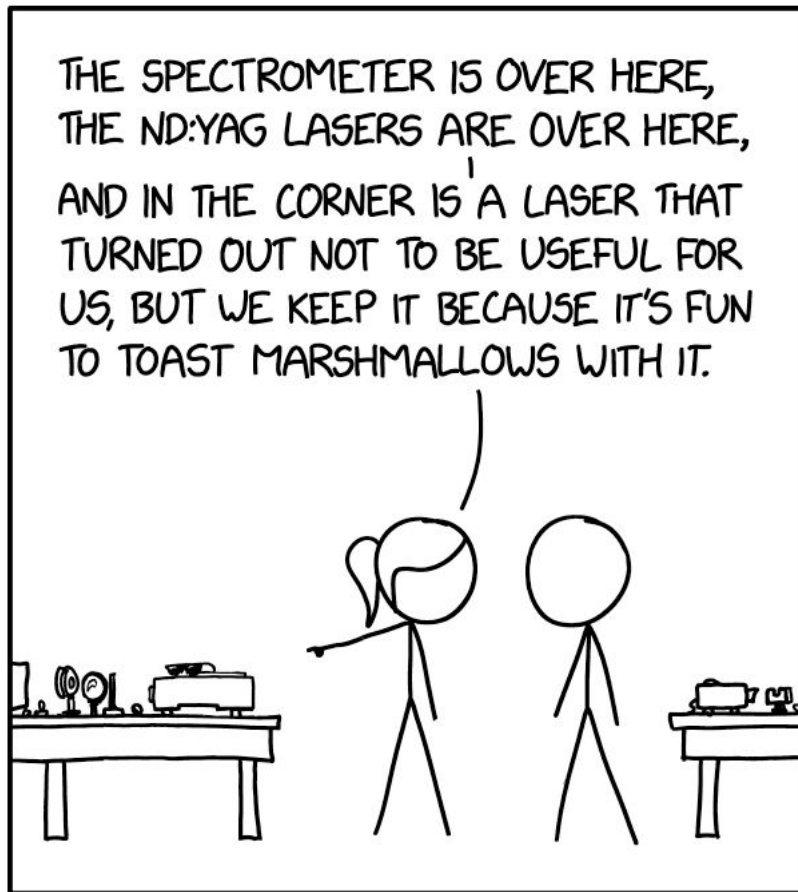


...and unused laboratory space
- University of Sarajevo

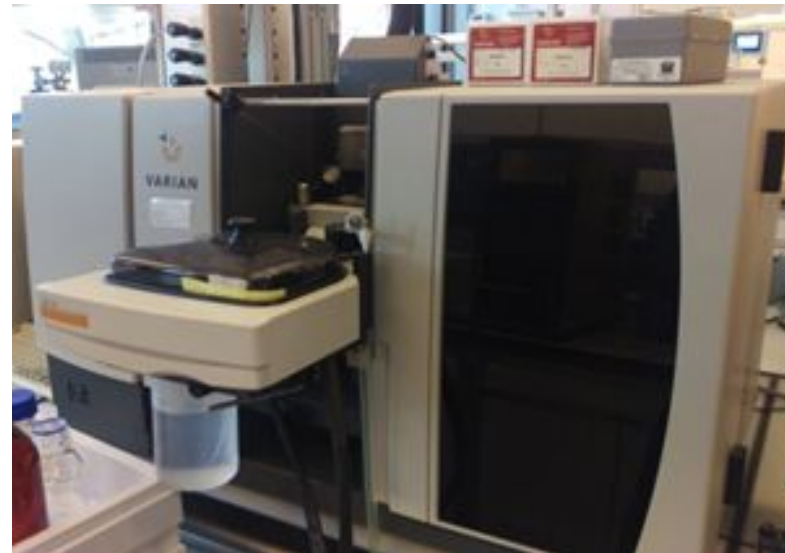


What got us started?

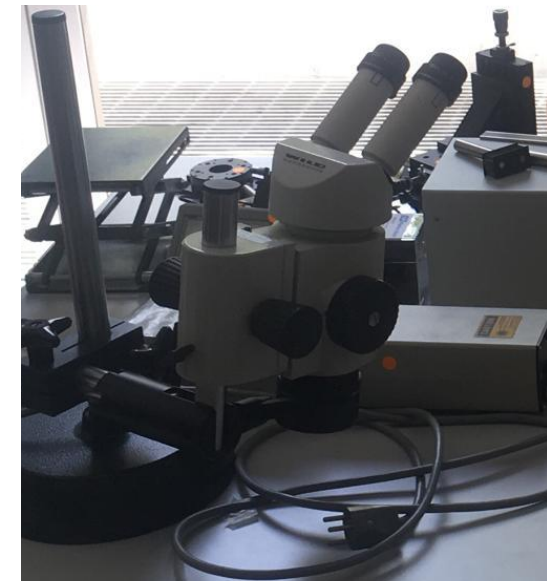
... and unused, stored equipment in others.



EVERY LAB IN EVERY FIELD HAS
SOME PIECE OF EQUIPMENT LIKE THIS.



unused functional instrument
for chemical analysis (replaced
by newer model)



abandoned microscope from
concluded side project

Our solution - EquipSent!

Recipients

Education & Research ↑
Competitiveness ↑
Sustainable development ↑



Donors & Strategic partners

Disposal cost ↓
New markets ↑
Corporate Social Responsibility ↑



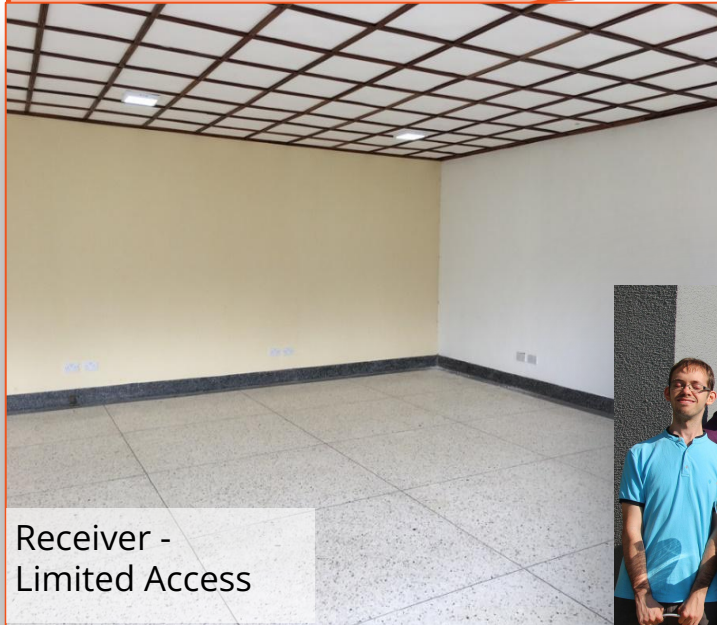
Matching



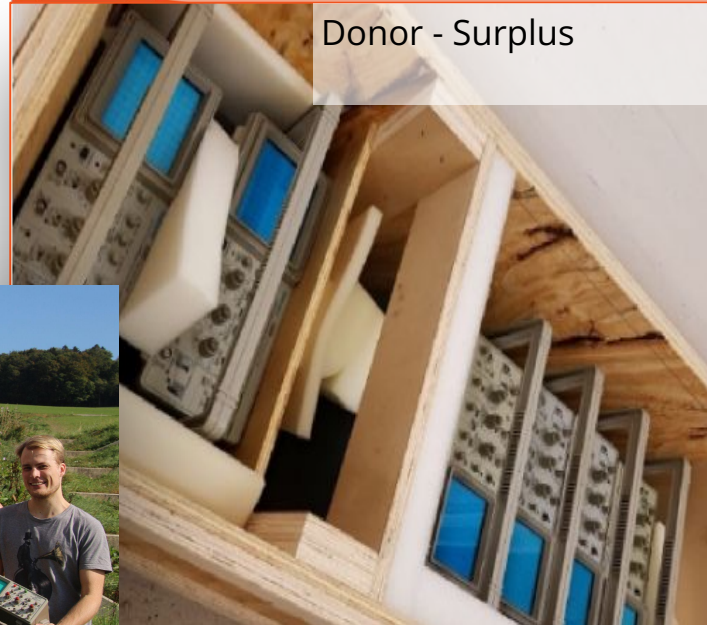
Shipping



Collaborations



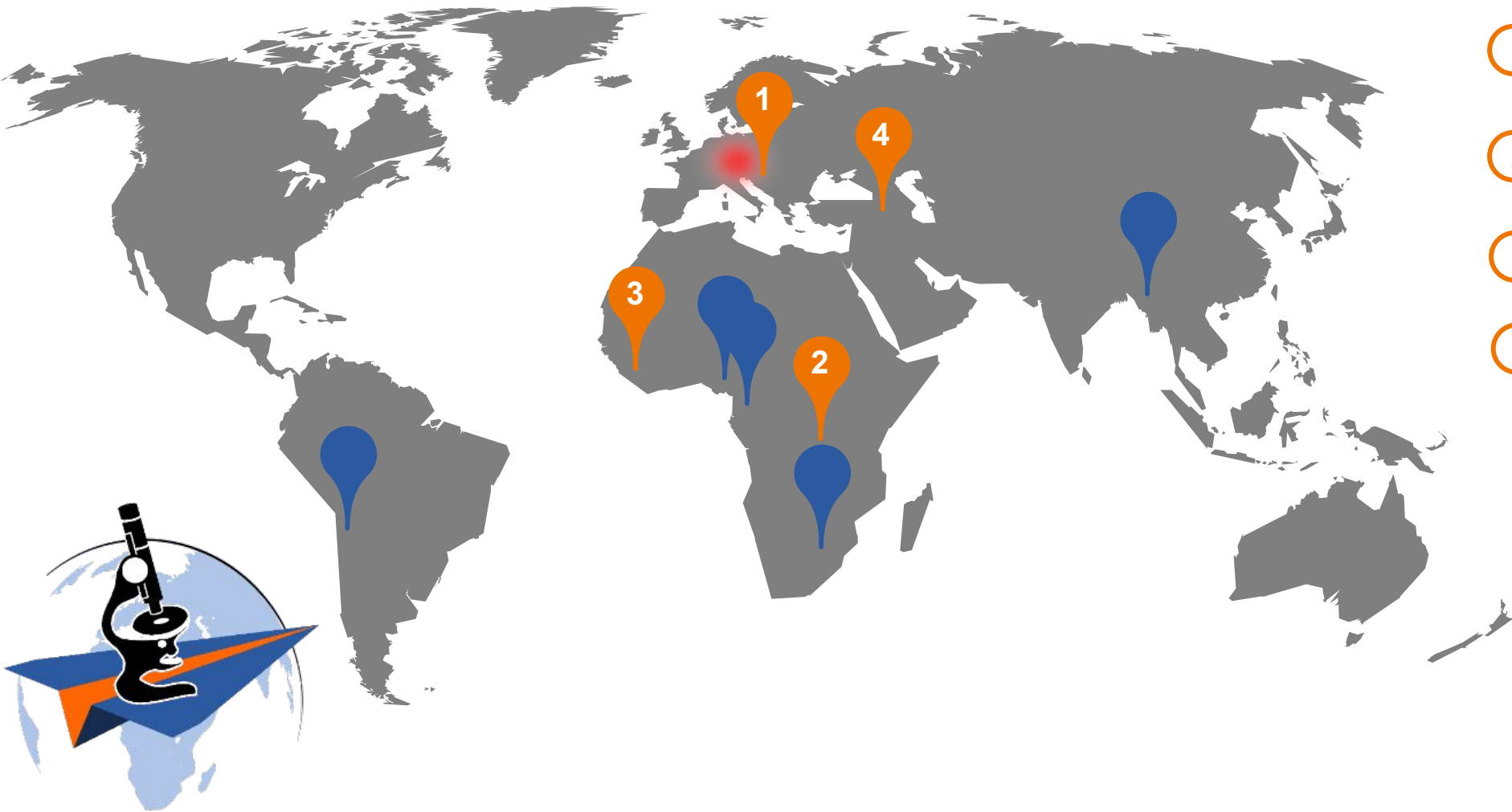
Receiver -
Limited Access



Donor - Surplus



Enabling global donations



Successful matches

- ① Sarajevo, Bosnia & Herzegovina*
- ② Beni, DR Congo
- ③ Duazon, Liberia
- ④ Yerevan, Armenia

*Watch the video here!



The process



For EquipSent the story continues after the shipment



Cheers for the next generation of congolese electrical engineers! @ UCBC, DR Congo



After our donation, UCBC renovated a classroom for the new Applied Sciences & Electronics Lab!



Current local projects target

- Environmental studies
- Renewable energy
- Public health (parasitic infections and other diseases)
- Food safety



~ 800

students benefited worldwide

1

Peer reviewed scientific publication



~700 Kg

scientific equipment

2

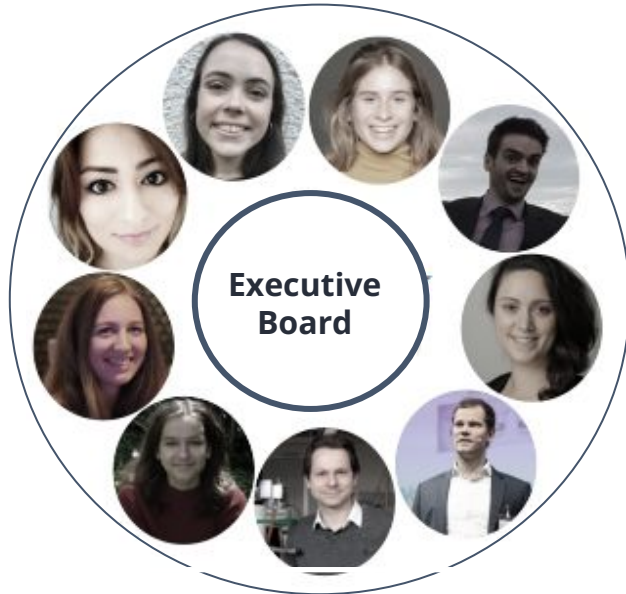
New local laboratories opened

>100.000 \$

Equipment value



Our global team of volunteers



opening for team leader
'Marketing & Social Media'

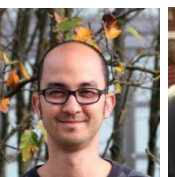
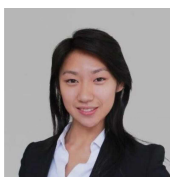
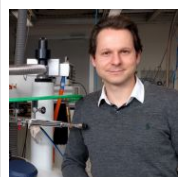
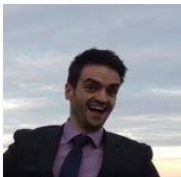
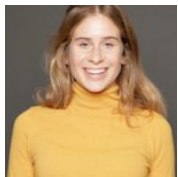
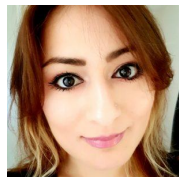
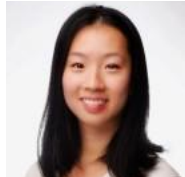
Partners
Provide volunteers, services,
funding or coaching

Experts
Provide specialized
knowledge on demand



General Assembly
EquipSent Members

you!



How can YOU make an impact?

Donate & encourage recipients!

Tired of tripping over that old PCR cycler/microscope/pile of stirring plates?

Relieve your mental stress in over-crowded lab spaces by checking functionality and possibly offering unused devices for donation! -> <https://equipsent.org/donate-equipment/>

Become a match maker or a case leader

→ **Lead and dive into a cultural exchange!**

- Organize challenging transfers across the globe
- Enhance your intercultural communication skills
- Enable hands-on teaching and create success stories

**Hear from active
case leader Anahit
later today!**

Together, let's
Enable education everywhere!



Opportunities

- **USA kick-off event Thu, 2nd of December, 6:00 pm**
(online, please contact irina.ritsch@equipsent.org)
- **A glimpse into operations:**
matchmaking and case management team meetings every second Tuesday of the month
(online, next: 12/14, please contact irina.ritsch@equipsent.org)



Follow us on social media



info@equipsent.org
www.equipsent.org



What does a case leader do?

report by Dr. Anahit Torosyan



How can you get involved?

Join a team/ Become a team head

→ Get involved in specific tasks and become a driving force

- **Create & design**
 - Create flyers, banners, success stories, schemes
 - Let your imagination fly
- **Scout & manage**
 - Manage equipment and keep our inventory up-to-date
 - Participate in selecting donors and/ or recipients
- **Organize & plan**
 - Social events
 - Fundraising
- **Connect & Assess**
 - Be a Matchmaker and connect the two worlds
 - Assess the impact of cases by trending
 - Manage our collaborations and screen for new partners

Become an EquipSent expert to be consulted on demand

- **Equipment,**
e.g. rate quality of equipment
- **Legal expert,**
e.g. Liability/ Warranty questions
- **Insurance advice,**
e.g. Insurance of equipment transfers
- **Shipping/Logistics expert,** e.g.
 - Reliable shipping companies
 - Transport routes and corresponding charges
 - Shipping documents
- **Finance expert,** e.g.
 - Participate in design of pricing strategy
 - Consult in accounting questions
 - Donations/ tax-exemption

How are we organized?

STRATEGY - There are still open questions to be answered, in particular when it comes to funding. The strategy team works to figure out concepts for pricing, financing and related requirements, such as acquiring tax-exemption. This team designs the strategy to approach different stakeholders and attract donations from them.

CORPORATE RELATIONS - Responsible for identifying new partners such as foundations, company donors, law firms, shipment companies. Creates and coordinates outreaching activities, like company pitches.

MARKETING - Responsible for getting the word out. This team manages outwards channels - such as the website and social media. This team designs essentially the communication strategy. Depending on what the goal is they work closely with other teams.

CASE MANAGEMENT - This team keeps an overview of all cases. It helps out case leaders in need and can also be a starting hub for new cases. It is ideally composed of members who worked in a case before and have some experience.

EQUIPMENT MANAGEMENT - All equipment that is temporarily in EquipSent's possession (virtual at a partner site or at our local storage) is taken care. This includes in particular management of the storage facilities as well as maintenance of the equipment database.

RECRUITING/HR - Recruitment of new people is paramount. This team focuses on getting new people on board and helping them join teams and activities. If some time is left they organize social activities.

