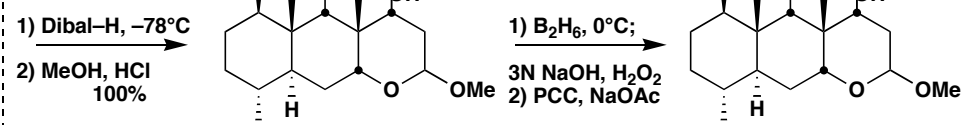
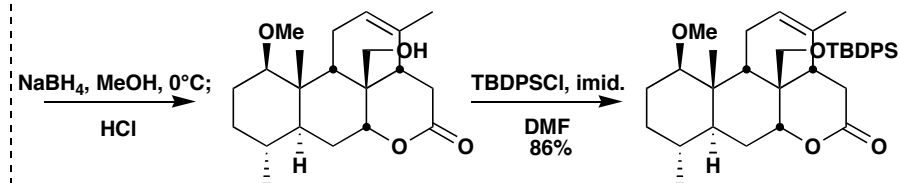
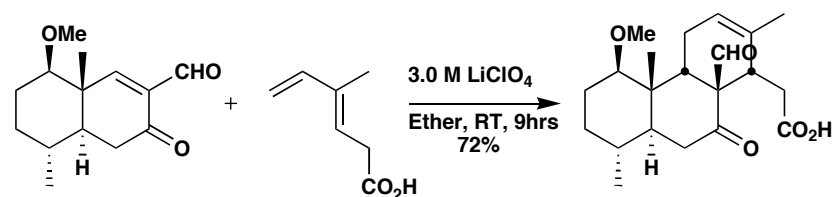
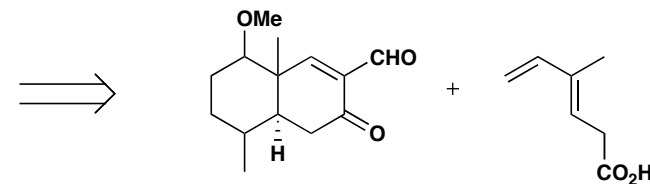
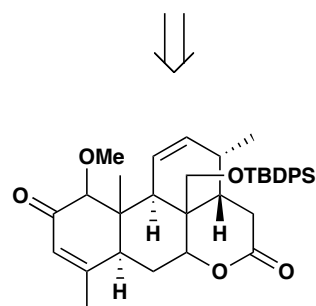
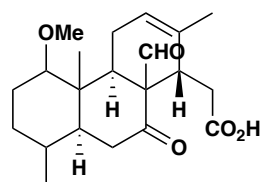
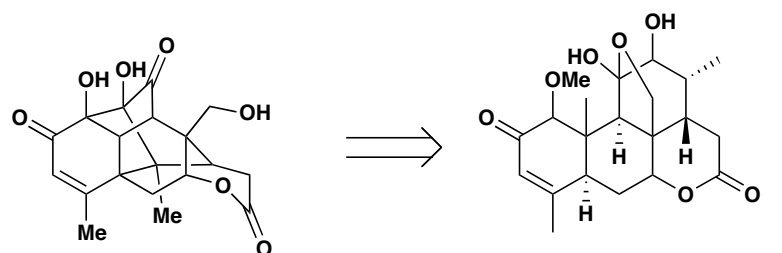
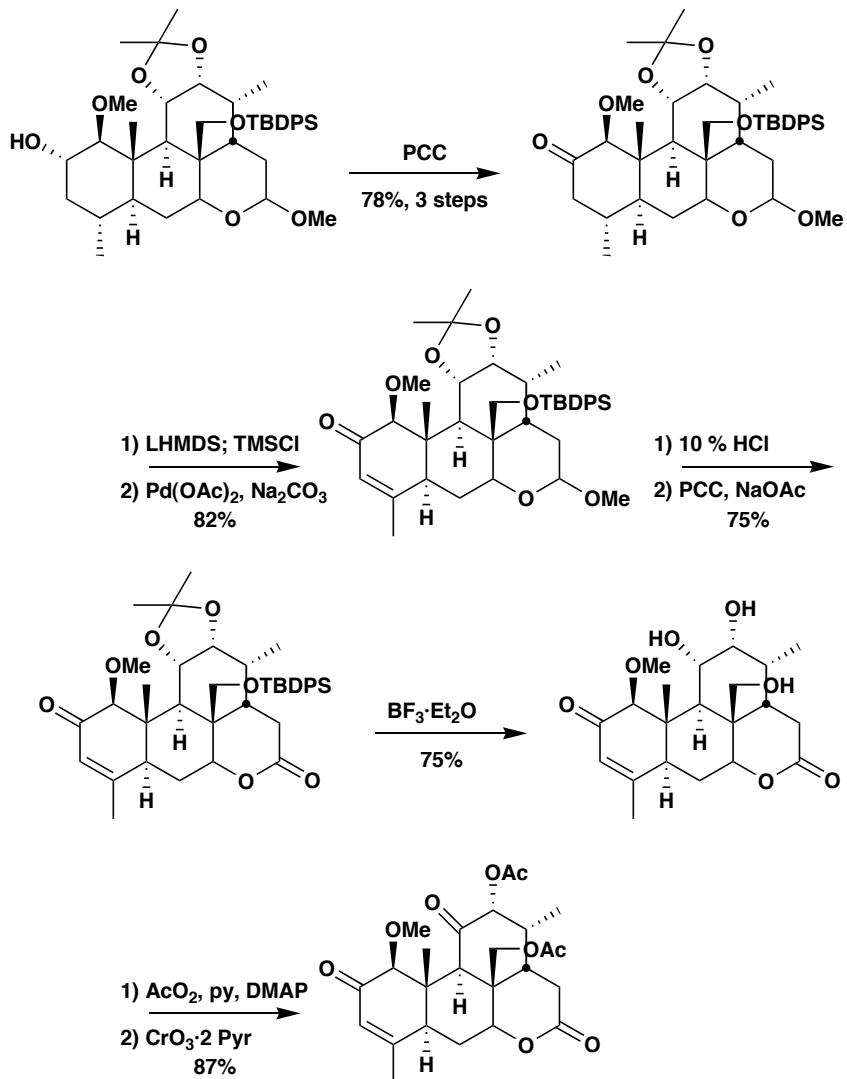
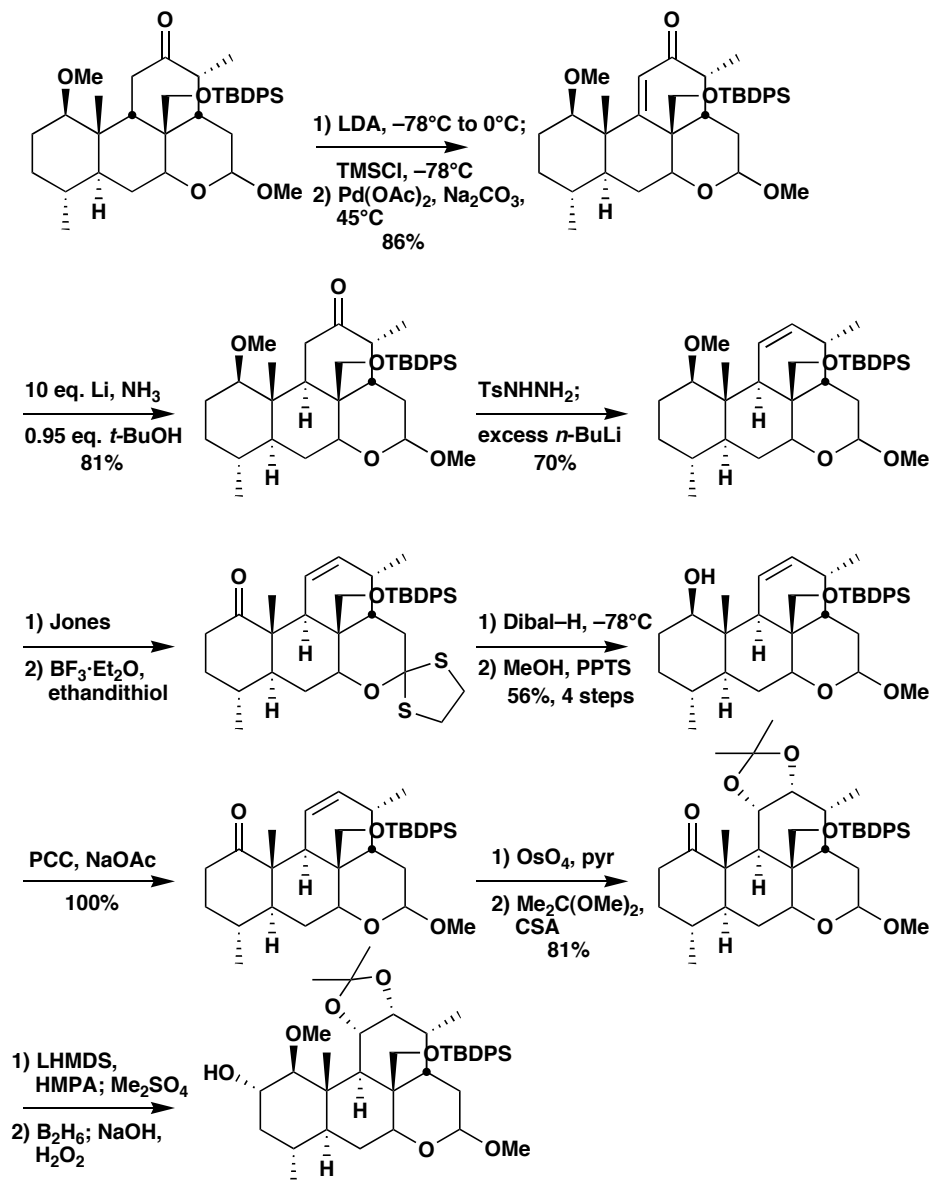
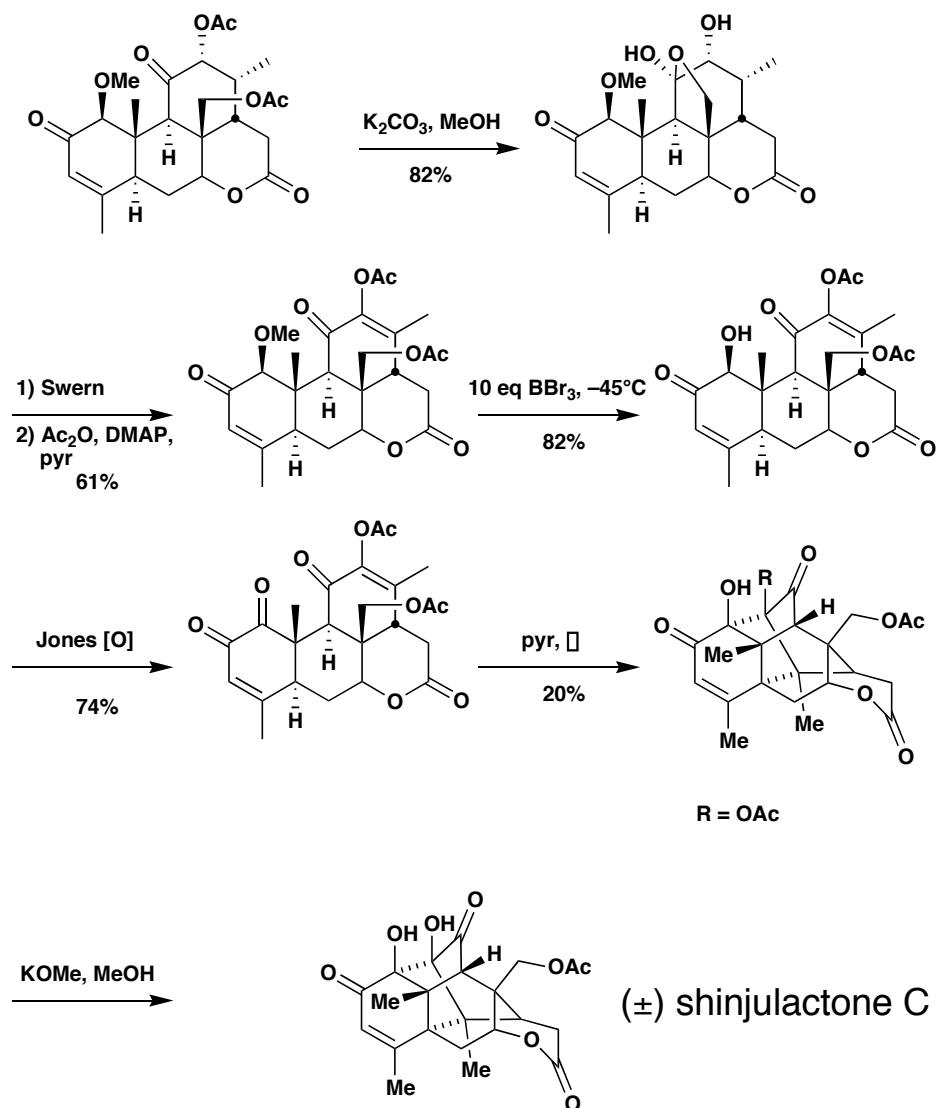
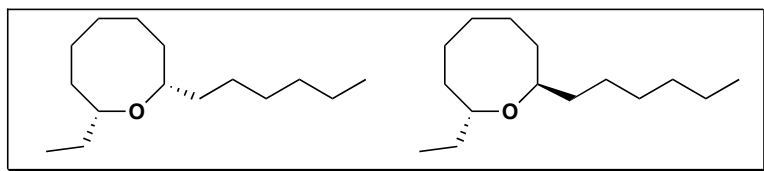
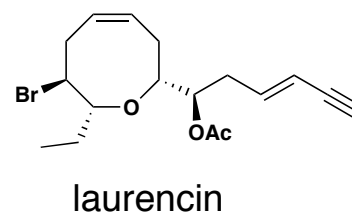
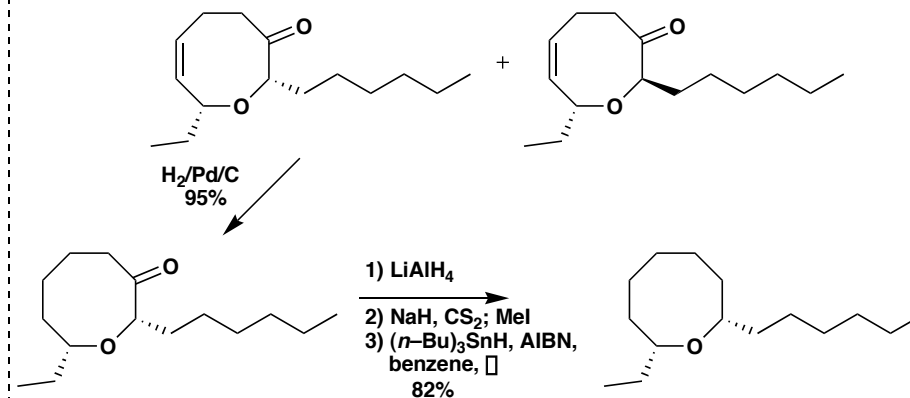
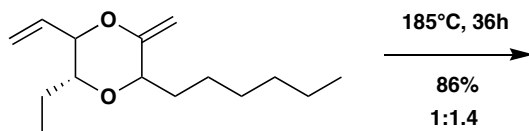
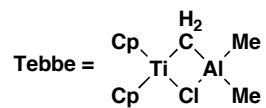
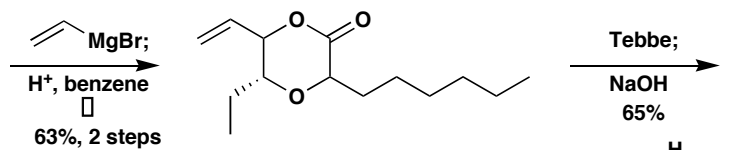
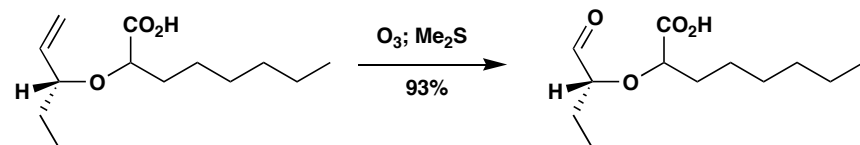
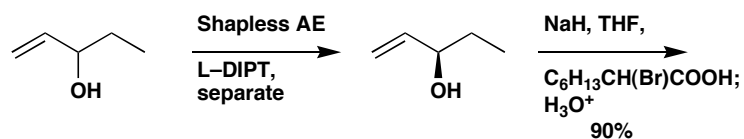


(±) shinjulactone C

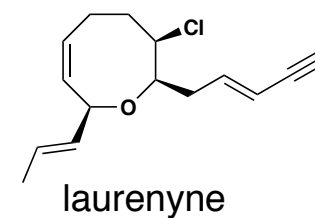




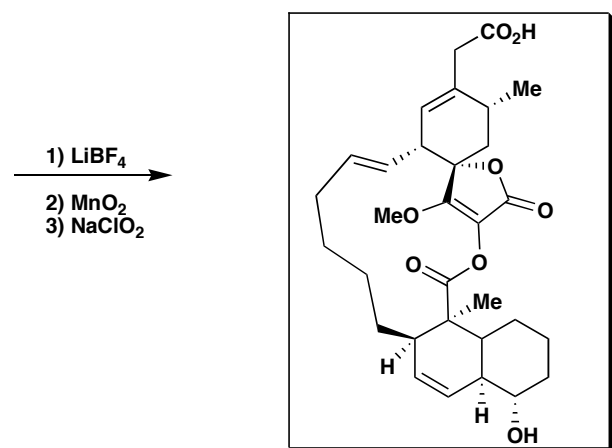
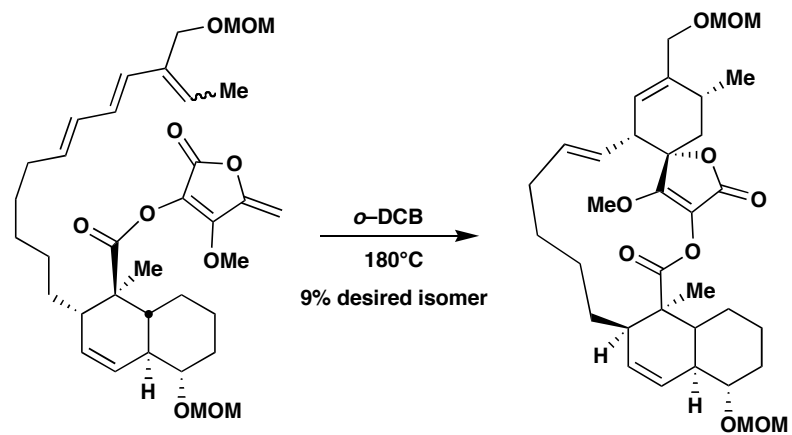


*cis*-lathisan*trans*-lathisan

laurencin

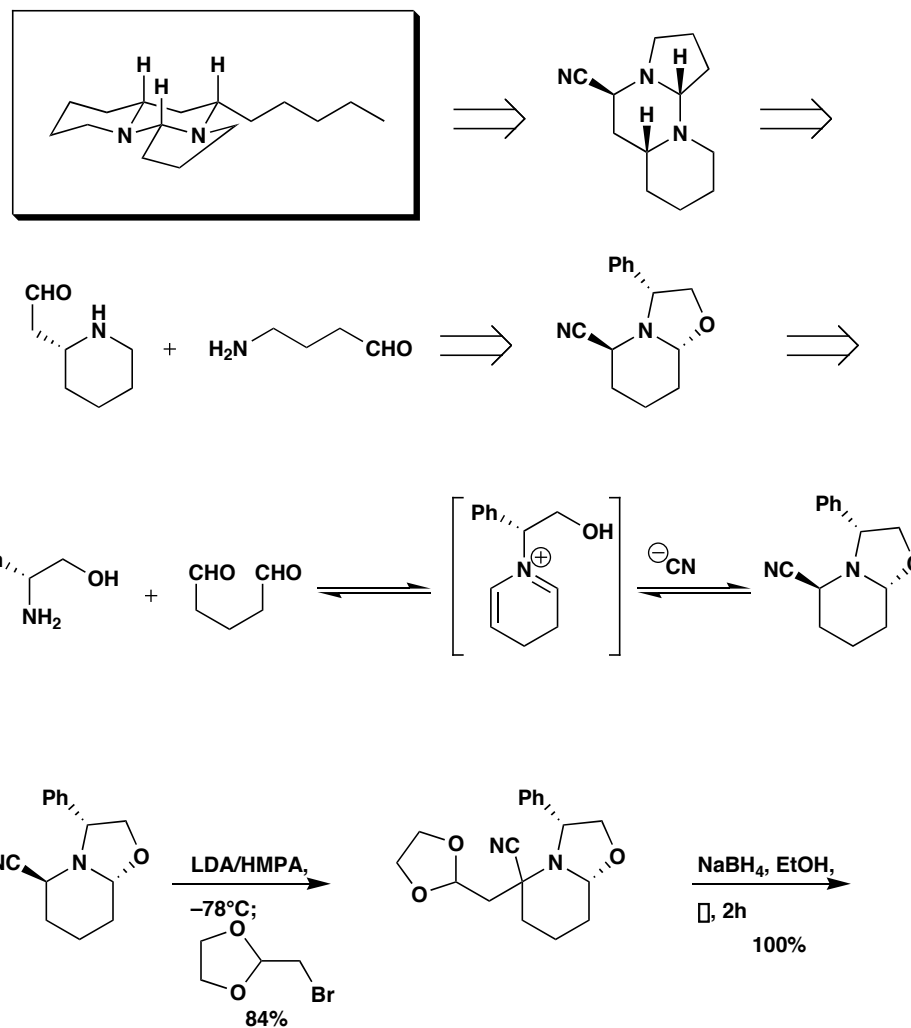


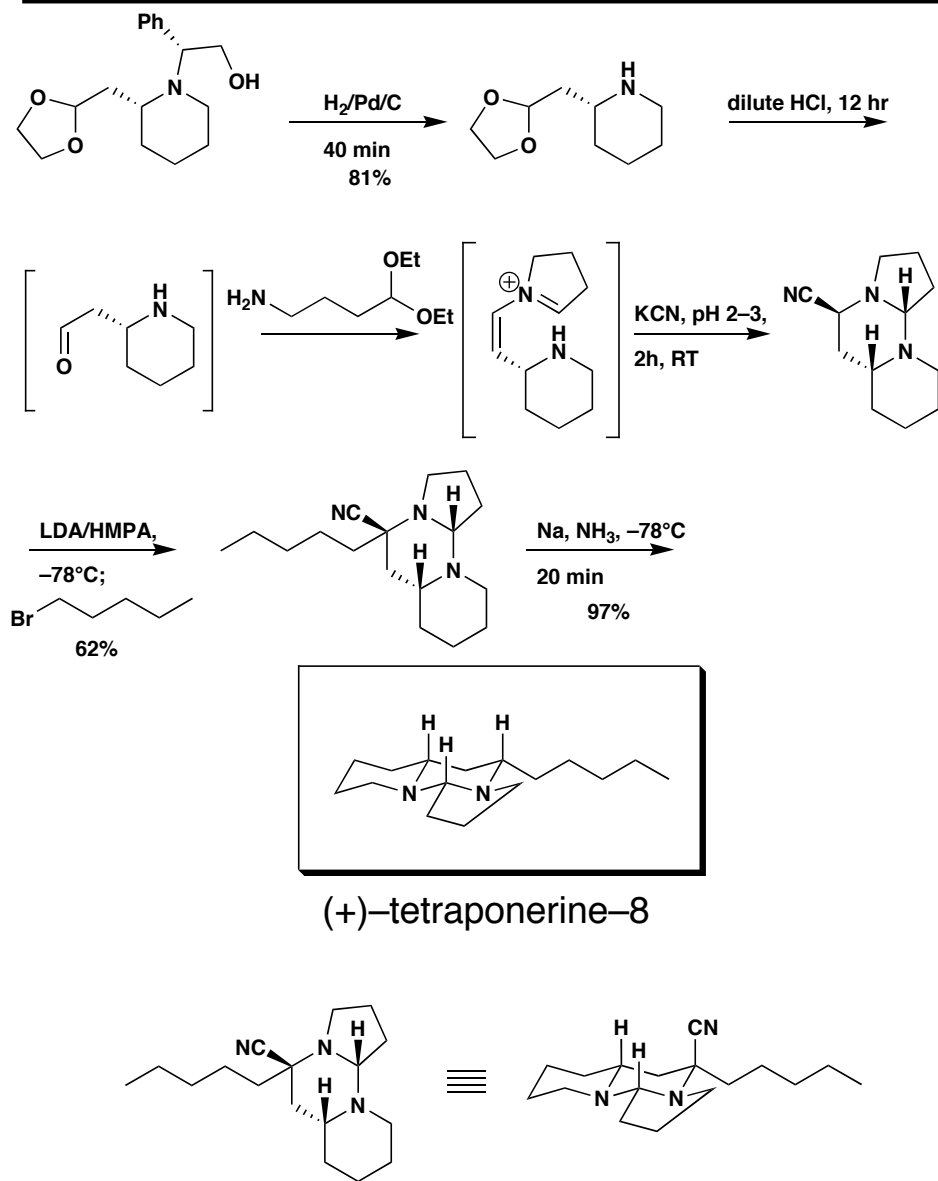
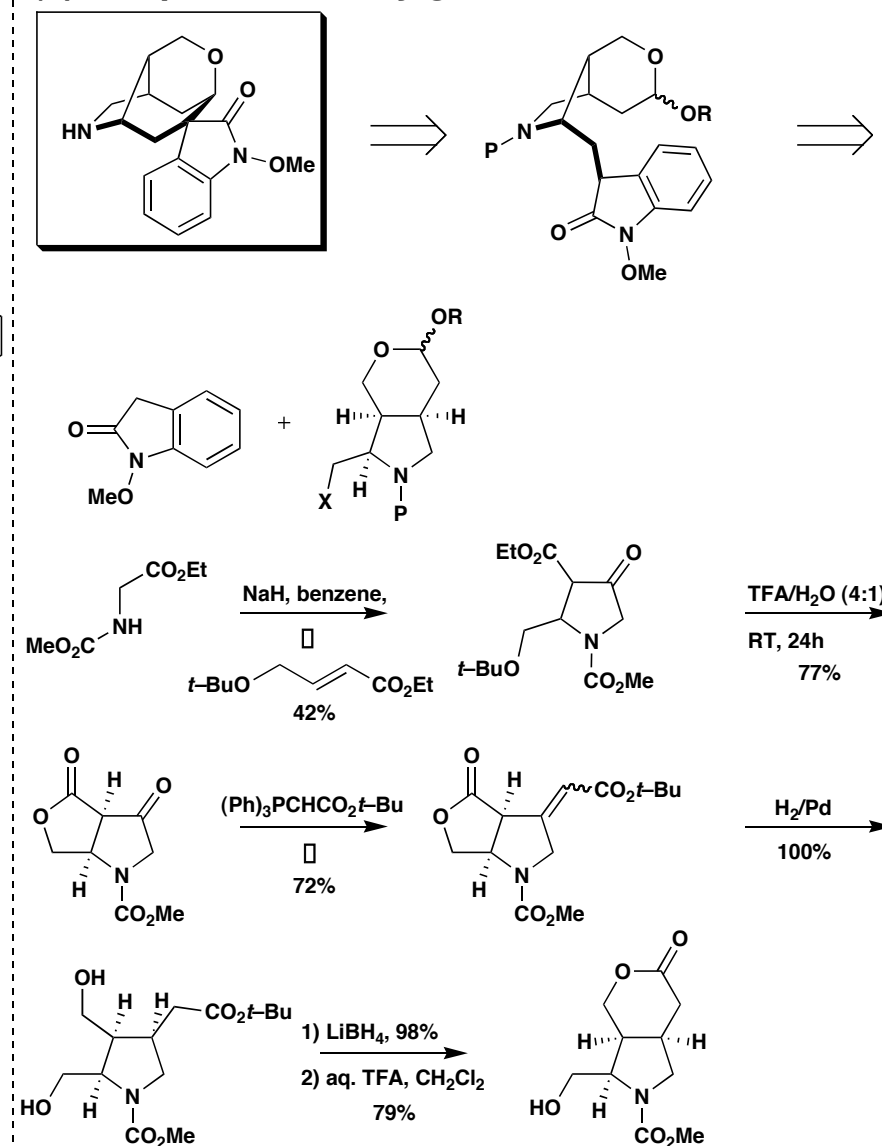
laurenyne

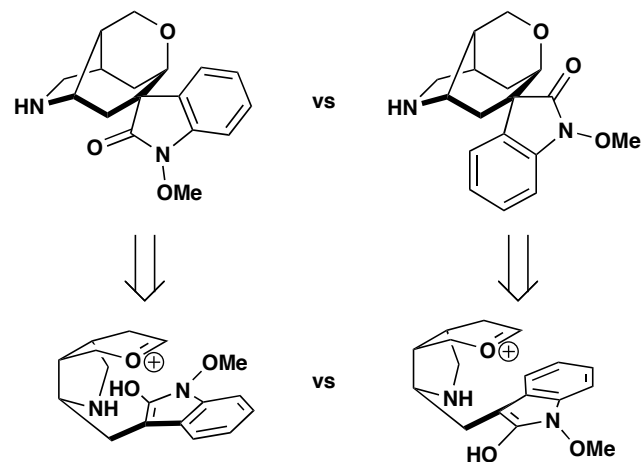
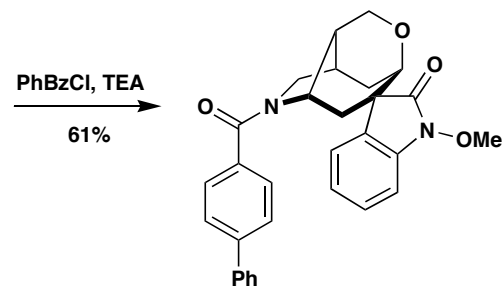
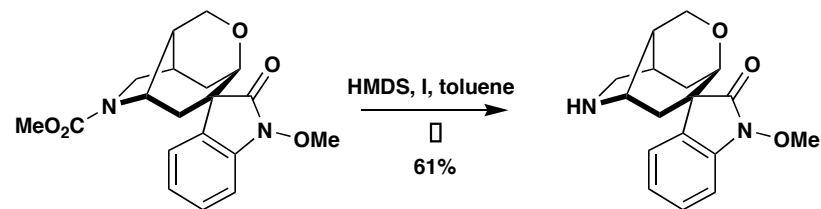
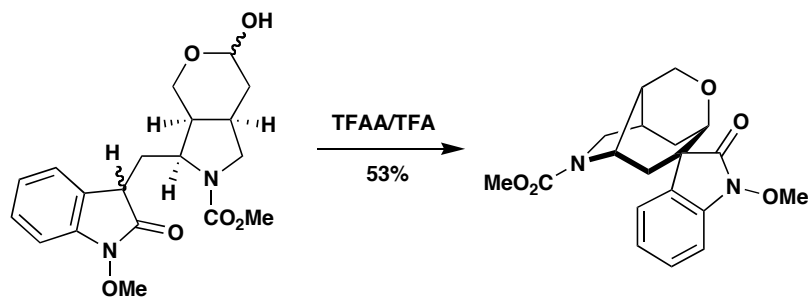
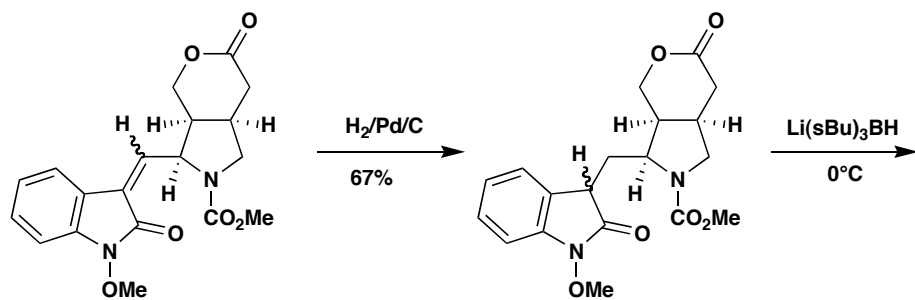
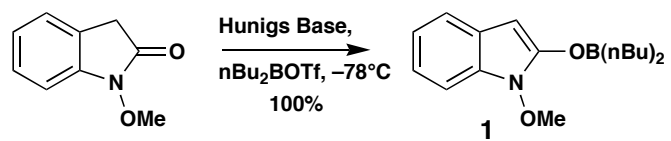
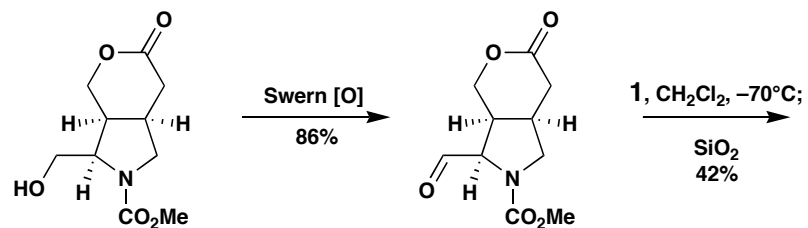


(\pm)-24-O-methylchlorothricolide

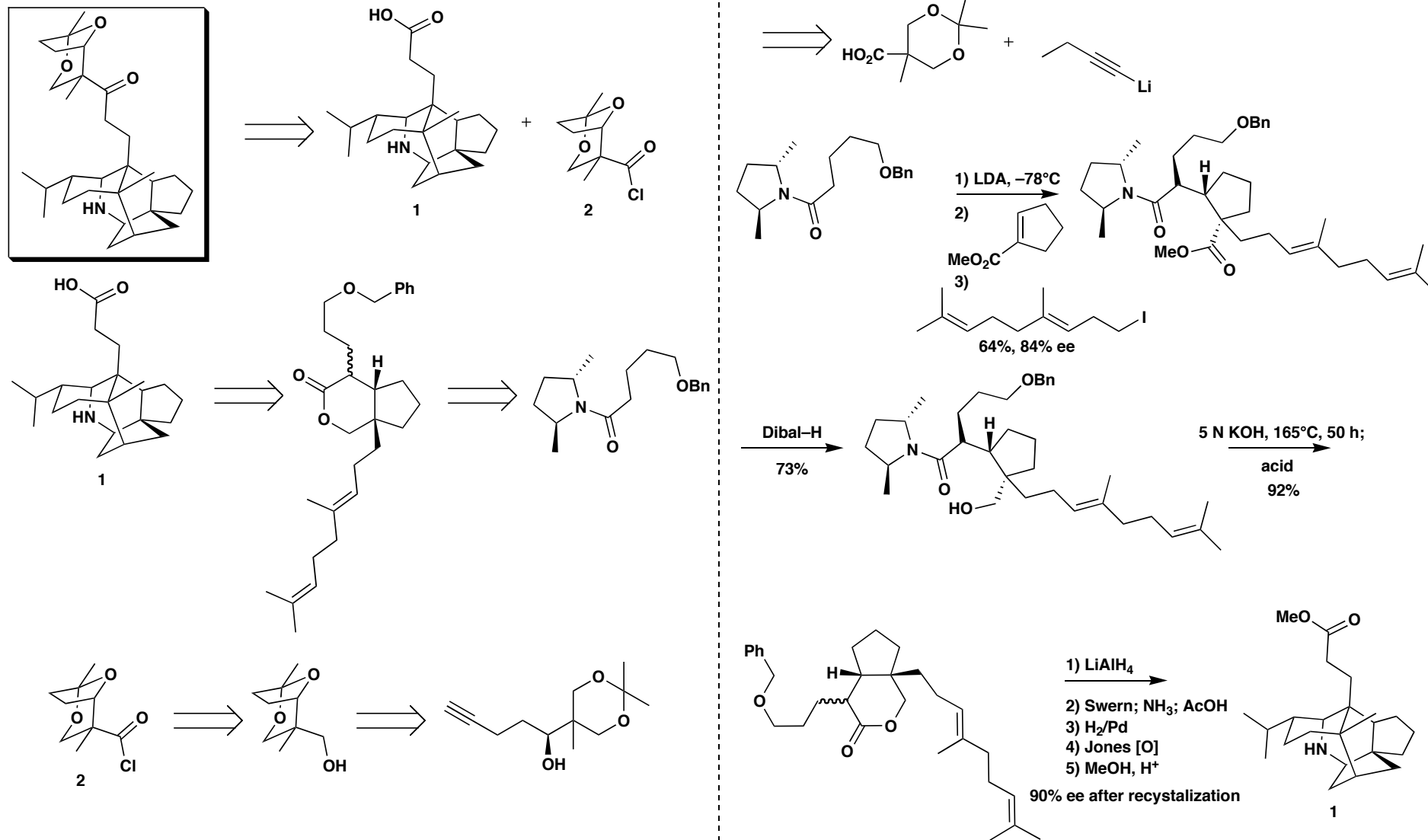
(+)-tetraponerine-8

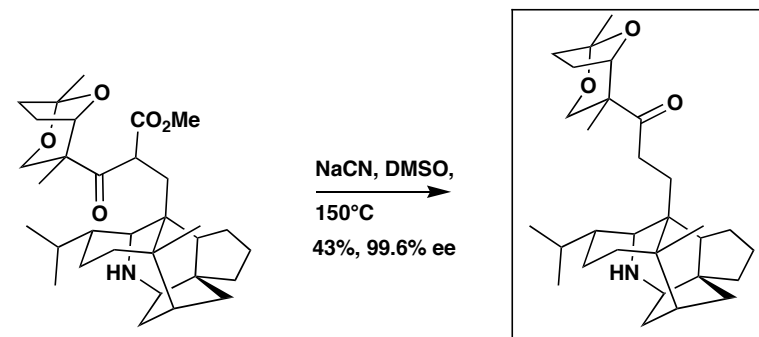
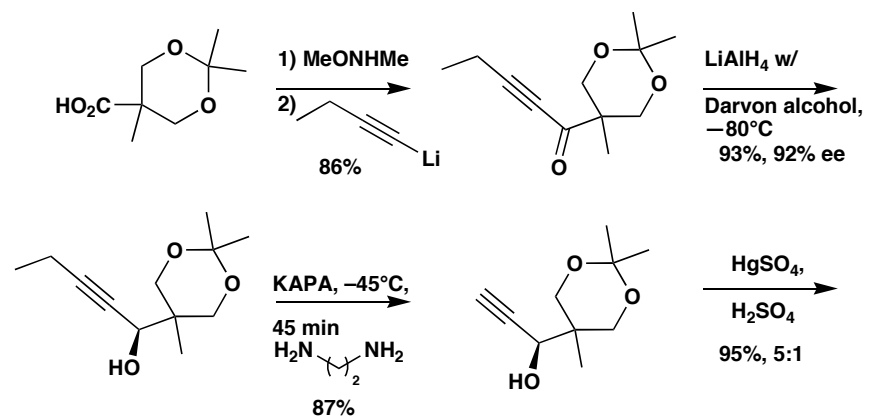


**(±)-7-epi-20-desethylgelsedine**

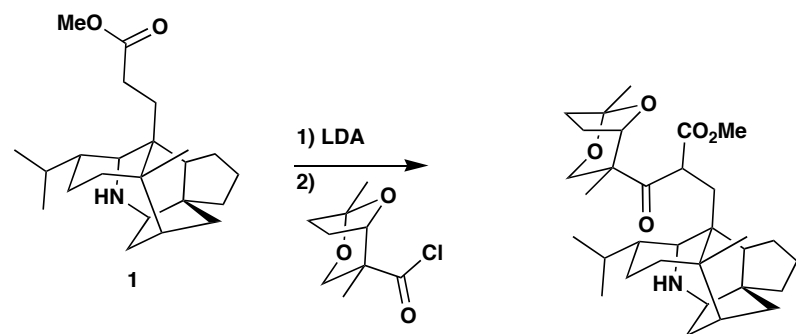
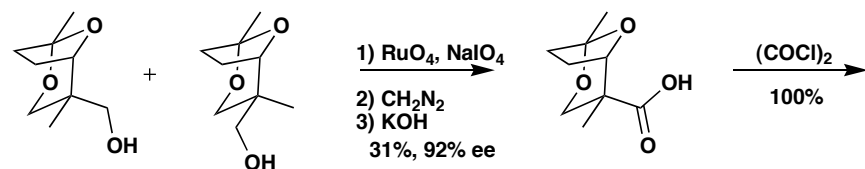


(-)-secodaphniphylline

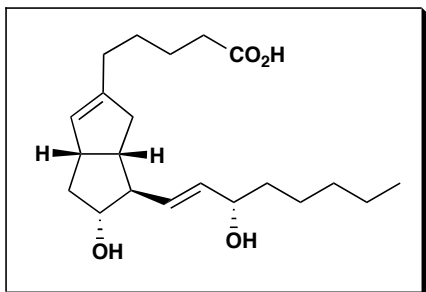




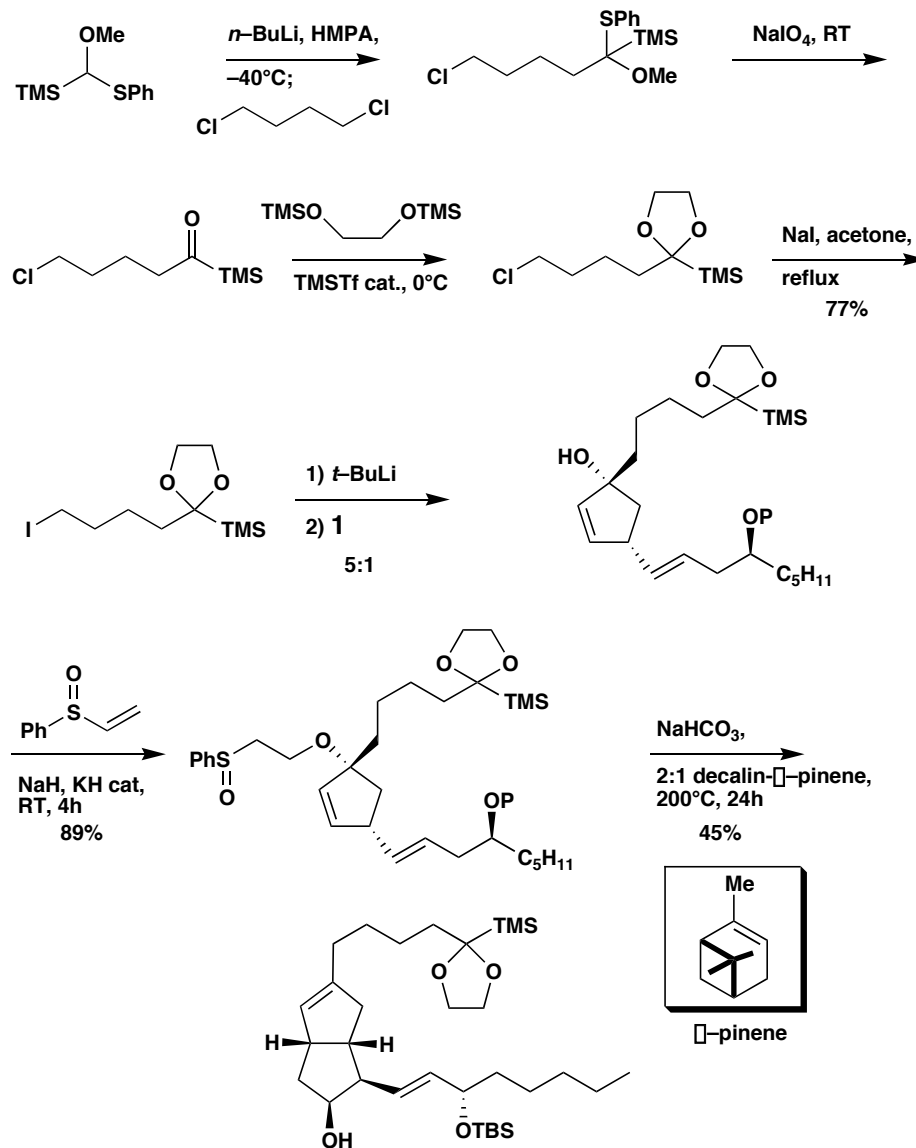
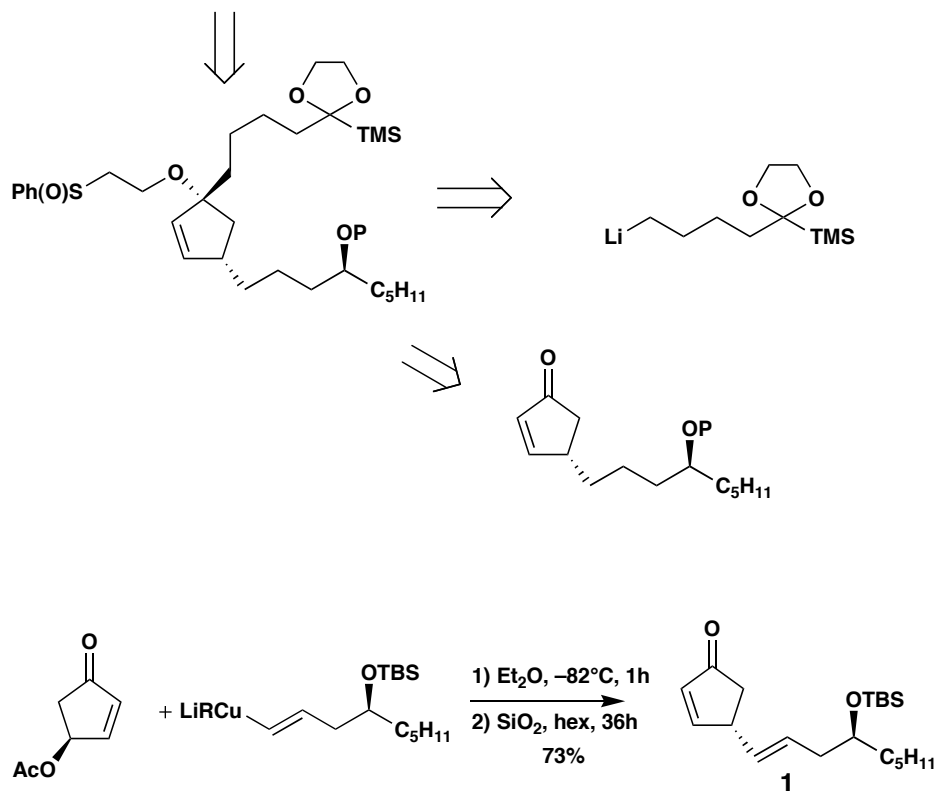
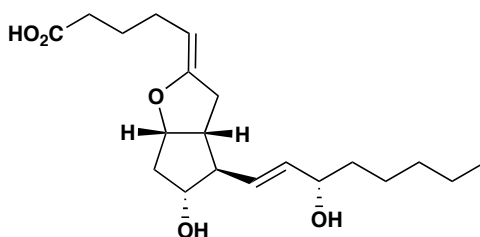
(-)-secodaphniphylline

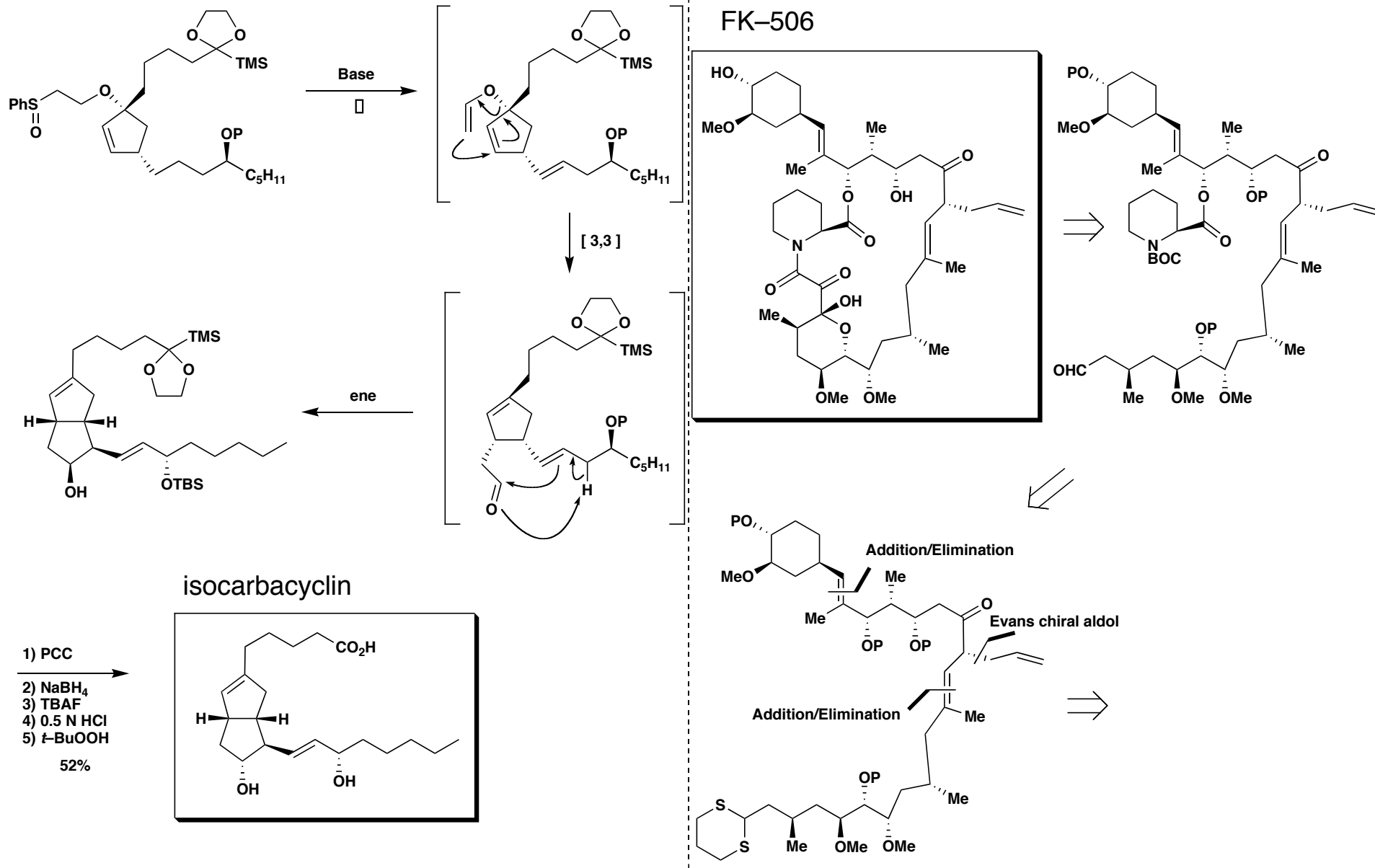


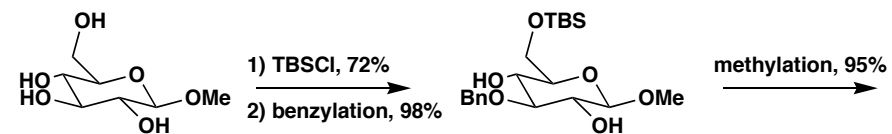
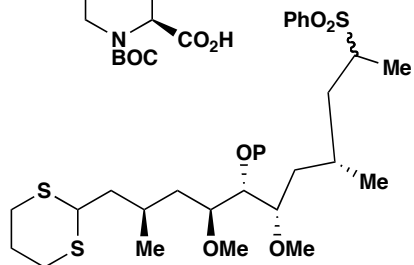
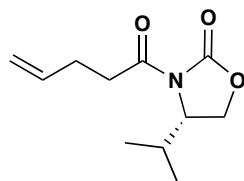
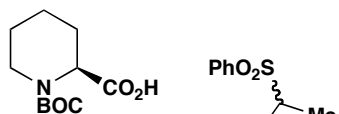
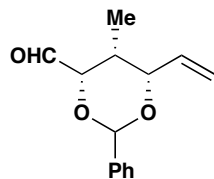
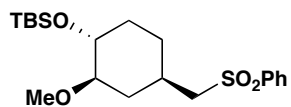
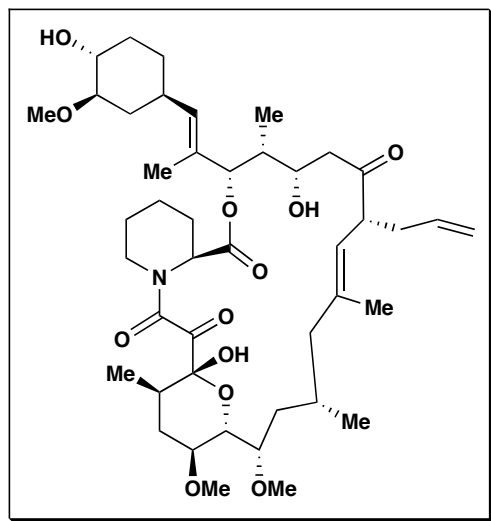
isocarbacyclin



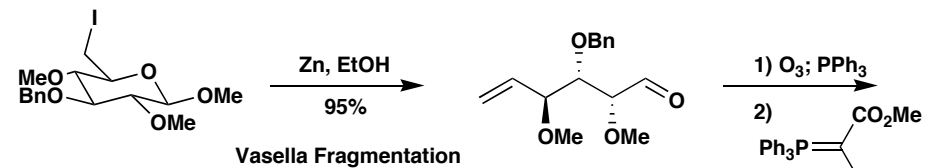
prostacyclin



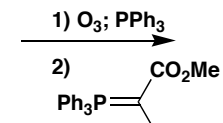




methylation, 95%



Vasella Fragmentation



64%, 2 steps

